

Description

ORALITE® GP 325 is a tough weather and solvent resistant tape designed to be sewn or high frequency welded on to high visibility garments. The reflectivity meets the highest performance level of EN ISO 20471:2013, and an approved testing laboratory has certified the tapes.

Product Construction

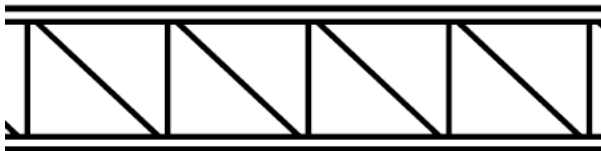
ORALITE® GP 325 is composed of cube corner (microprism) retroreflective elements integrally bonded to a flexible, smooth-surfaced tough and weather resistant UV stabilised polymeric film. The reflective material is welded to a UV stabilised polymeric film to protect the prism surfaces from dirt and moisture.

Product Approval

EN ISO 20471:2013 Separate Performance

Test certificates for garment CE mark acquisition are available upon request.

Visual Appearance*



Colour

ORALITE® GP 325 is available in silver, white and fluorescent lime. ORALITE® GP 325 series tapes conform to the colour requirements in Table 2 when measured in accordance with CIE Publication No. 15.2. The four pairs of coordinates determine the acceptable colour when measured with standard illuminant D65 using a Hunter LabScan.

Retroreflectivity

ORALITE® GP 325 tapes comply with the minimum reflectivity requirements of EN ISO 20471:2013 separate performance, when tested in accordance with the procedures in EN ISO 20471:2013. *Minimum* coefficients of retroreflection for ORALITE® GP 325 are provided in Table 1.

Care Instructions

ORALITE® GP 325 when washed in accordance with EN ISO 20471:2013 will withstand a minimum of 25 washings at 60° C when attached to a variety of background materials.



Application Instructions

Please contact ORAFOL for full instructions.

Shelf Life

The product must be used within one year from the shipment date. All rolls including partially used rolls should be stored in original packaging, tightly wound. Store in a clean and dry area, away from direct sunlight. Store at 20° C and 50% relative humidity.

Table 1
Retroreflectivity

Observation Angle	Entrance Angle ($\beta_1, \beta_2=0$)			
	5°	20°	30°	40°
0,20°	330	290	180	65
0,33°	250	200	170	60
1,00°	25	15	12	10
1,50°	10	7	5	4

All values have units of cd/lux/m².

Table 2
Colour Specification Limits

Colour	Chromaticity Coordinates*							
	1		2		3		4	
	x	y	x	y	x	y	x	y
15 Silver / white	0,303	0,287	0,368	0,366	0,340	0,393	0,274	0,329
20 Lime	0,387	0,610	0,356	0,494	0,398	0,452	0,460	0,540

*) The four pairs of chromaticity coordinates determine the acceptable chromaticity on the CIE diagram.

Vertical and horizontal tooling lines are an inherent part of the manufacture of microprismatic materials and may be visible in some tapes. The performance of the tape due to the presence of such tooling lines is not affected.

IMPORTANT NOTICE

All ORALITE® products are subject to careful quality control throughout the manufacturing process and are warranted to be of merchantable quality and free from manufacturing defects. Published information concerning ORALITE® products is based upon research which the Company believes to be reliable although such information does not constitute a warranty. Because of the variety of uses of ORALITE® products and the continuing development of new applications, the purchaser should carefully consider the suitability and performance of the product for each intended use, and the purchaser shall assume all risks regarding such use. All specifications are subject to change without prior notice.

ORALITE® is a registered trademark of ORAFOL Europe GmbH.

