

## Description

ORALITE® Brilliance® Series GP440 Garment Trim is a tough weather and solvent resistant fabric backed trim designed for sew-on application to heavy duty and premium value high visibility safety apparel such as insulated jackets, breathable rainwear, uniforms, etc. The thin and flexible retroreflective garment trim offers superior brightness with a soft hand for increased wearer comfort. The trim features a smooth sealed outer surface which provides superior performance in the critical areas of abrasion resistance, wet performance and cleaning.

ORALITE® Brilliance® Series GP440 reflective trim complies with all the requirements for retroreflective trim in accordance with ANSI/ISEA 107-2020; and CSA Z96-2022 for Level 2 photometric performance.

## Construction

ORALITE® Brilliance® Series GP440 Garment Trim is composed of cube corner microprism reflective elements integrally bonded to a flexible, smooth-surfaced, weather resistant UV stabilized polymeric film. The prism surfaces are metalized to protect them from dirt and moisture. The product is provided with a knit fabric backing to facilitate sew-on applications.

## Reflectivity

ORALITE® Brilliance® Series GP440 Garment Trim exceeds the minimum reflectivity requirements of ANSI/ISEA 107-2020 and CSA Z96-2022 for level 2 performance. Typical reflectivity at 0.20° observation and +5 entrance angles is 1000 cd/lux/m<sup>2</sup> for the white/silver color and 800 for the fluorescent yellow-green color.

## Color

ORALITE® Brilliance® Series GP440 Garment Trim is available in two colors: A white silver color which has a white reflected nighttime color and fluorescent yellow-green which has a yellow-green reflected nighttime color.

Note: The ORALITE® Brilliance® Series GP440 Garment Trim in fluorescent yellow-green is not a combined performance material.

## Enhanced Surface Preparation

ORALITE® Brilliance® Series GP440 Garment Trim is manufactured with a unique Enhanced Surface Preparation (ESP), which minimizes staining of the garment trim from fluorescent dyes as a result of bleeding from background fabrics during laundering and intimate contact. ESP also provides a glossy top surface, which is inherently resistant to soiling and allows for easy cleaning.

## Wet Performance

When tested according to ANSI/ISEA 107-2020 section 10.4.6 Retroreflective Wet Performance, ORALITE® Brilliance® Series GP440 Garment Trim will typically retain 70% of its photometric performance when dry.

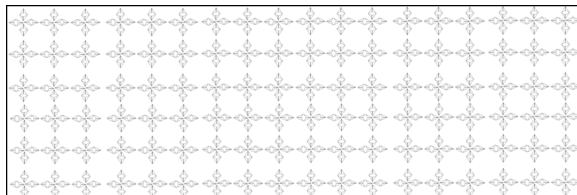
## Washing Information

ORALITE® Brilliance® Series GP440 Garment Trim has been certified to withstand a minimum of 100 washings when washed in accordance with ANSI/ISEA 107-2020 section 10.4.5.2. **DO NOT DRY CLEAN**

## Application Instructions

ORALITE® Brilliance® Series GP440 Garment Trim is manufactured with a knit fabric backing to facilitate sew-on applications. A stitch count of 8-10 stitches per inch is recommended.

## Film Pattern



ORAFOL Americas – GA  
1100 Oracal Parkway  
Black Creek, GA 31308  
Phone: 888.672.2251

ORAFOL Americas – CT  
120 Darling Drive  
Avon, CT 06001  
Phone: 800.654.7570

ORAFOL Canada  
2831 Bristol Circle  
Oakville, Ontario L6H 6X5  
Phone: 888.727.3374

[techsupport-americas@orafol.com](mailto:techsupport-americas@orafol.com)

[www.orafol.com](http://www.orafol.com)

**Note:**

All ORALITE® products are manufactured within an ISO 9001:2015 controlled manufacturing environment and batch traceability is possible on the basis of the roll number.

**IMPORTANT NOTICE**

All ORALITE® products are subject to careful quality control throughout the manufacturing process and are warranted to be of merchantable quality and free from manufacturing defects. Published information concerning ORALITE® products is based upon research which the Company believes to be reliable although such information does not constitute a warranty. Because of the variety of uses of ORALITE® products and the continuing development of new applications, the purchaser should carefully consider the suitability and performance of the product for each intended use, and the purchaser shall assume all risks regarding such use. All specifications are subject to change without prior notice.



WARNING – This product may expose you to chemicals which are known in the State of California to cause cancer and birth defects or other reproductive harm. For more information, go to – [www.P65Warnings.ca.gov](http://www.P65Warnings.ca.gov)

ORALITE® is a trademark of ORAFOL Europe GmbH



ORAFOL Americas – GA  
1100 Oracal Parkway  
Black Creek, GA 31308  
Phone: 888.672.2251

ORAFOL Americas – CT  
120 Darling Drive  
Avon, CT 06001  
Phone: 800.654.7570

ORAFOL Canada  
2831 Bristol Circle  
Oakville, Ontario L6H 6X5  
Phone: 888.727.3374

[techsupport-americas@orafol.com](mailto:techsupport-americas@orafol.com)

[www.orafol.com](http://www.orafol.com)